

LEADERSHIP AND THE POWER OF NUMBERS

(NUMEROLOGY PERSPECTIVE)

INTRODUCTION

1. Leadership is a significant factor influencing success in an organisation. Team leaders are vital in carrying out the organisation's vision and mission and setting the tone for their staff. Influential team leaders can develop ways to help the organisation grow and develop. The leader offers guidance to all team members to ensure they fulfil their roles. Guidance can involve training and educating team members and taking corrective action or even punishment when needed. The guidance also includes responding to questions and resolving issues that may hinder job performance. Influential team leaders ensure that team morale remains high and that staff are motivated to do well. Leaders can influence morale by helping to inspire confidence and trust in workers so that they take a positive approach to their work and the organisation as a whole. A team leader can promote an ambience of creativity that can lead to innovation. The most crucial thing is that the team leaders can promote essential values that are critical to the success of an organisation. A team leader who demonstrates **integrity** in all his activities can work as a role model to ensure that they act the same way.

2. Many people do not realize that the thoughts, words and actions of a leader can affect the people they lead. Consciously or not, thoughts carry the most significant influence on their team members. Thought will create a character for the team leader and their members, then will determine the organisation's fate. Based on Lao Tzu quote: "**Watch your thoughts; they become words. Watch your words; they become actions. Watch your actions; they become habits. Watch your habits; they become character. Watch your character; it becomes your destiny**".

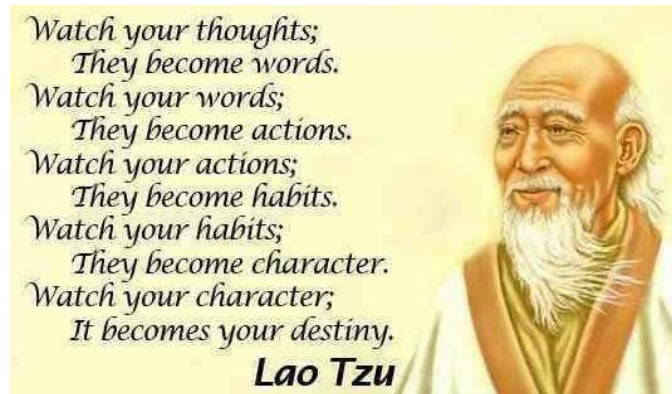


Figure 1. Lao Tzu quote.

3. The best way to build the organisation's success is to build it from the inside. Taking Idowu Koyenikan quote: **"Build success from inside out"**.



Figure 2. Idowu Koyenikan quote.

The real success comes from inside. The organisation will achieve real success if it has a great leader who is wise and enlightened. A leader who knows what he is like and what the people he leads are like. Understand the strengths and weaknesses of himself and the people he leads. Every human being is born with innate characters, both positive and negative. If we can identify these characters, we can optimise the positive character and mitigate the opposing character. This is highly needed to achieve success in each of our interactions. This is also in line with the Sun Tzu's quote: **"If you know the enemy and know yourself, you need not fear the result of a hundred battles"**. The leader's interaction with his staff is like a war; if

we want a win-win solution in every interaction, we all have to understand each other.

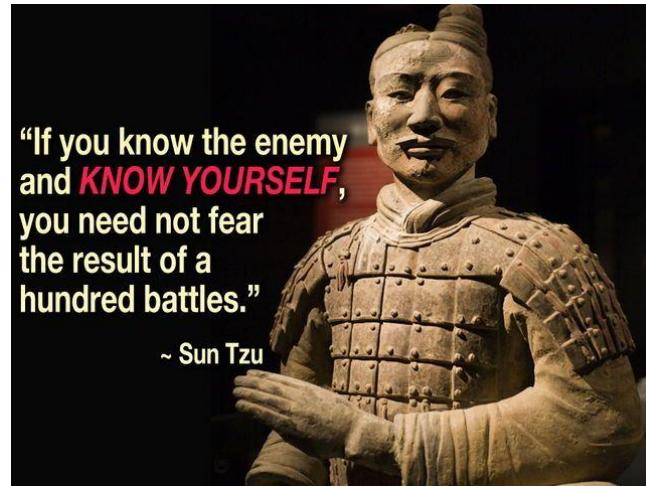


Figure 3. Sun Tzu quote.

LEADERSHIP

4. The studies on leadership have tried to answer some fundamental questions: who is a leader; what skills and abilities are needed to be a good leader; how can his/her effectiveness and operational efficiency be measured; and how can one become a leader. In the specific military context, one asks whether or not military leadership is different from civil leadership and what can be done to improve the exercise of the leadership role (Hao & Yazdanifard, 2015). In the context of this research paper, the leader starts from the leader for himself to the highest leader in a country, namely the president, king or prime minister. To climb the leadership ladder successfully, we must ascend from the bottom until we are finally trusted to occupy the next leadership position. In the military field, in addition to knowledge and skills, the trust of superiors is highly needed for us to occupy the following position. Leadership is a kind of power where one person has the ability to influence or change the values, beliefs, behaviours and attitudes of another person. The leaders who possess strong leadership

have the strength to influence others to achieve the goals and objectives of the organization.

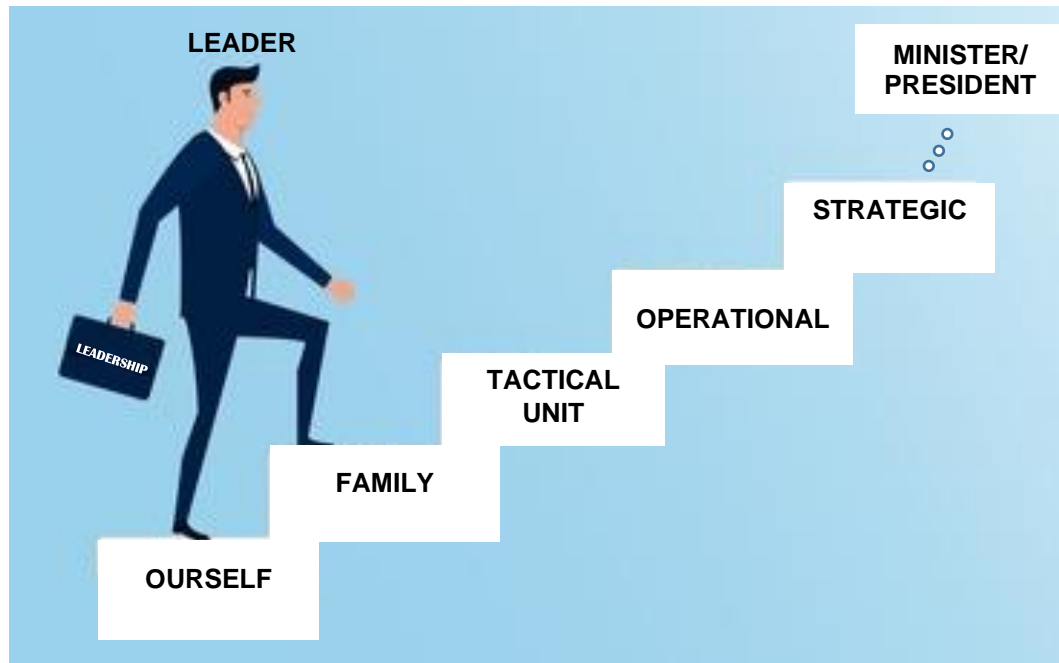


Figure 4. Leadership ladder in the military

Before Leading Others, we must first be able to lead ourselves in the right direction. Leading ourselves is as easy as understanding ourselves and our efforts to achieve our life goals, both long term and short term. Leading ourselves is the essential art of leadership that must be mastered. Of course, everyone wants a leader who can lead himself and set an example for the people he leads. To be a true leader every day takes quite a challenging effort. Because we are not always in good shape; we are not always able to control ourselves from the presence of the true enemy in every human being, namely ego and lust. In an effort to help us identify the characters that appear every day, our date of birth can be a tool that helps us identify our innate, positive and negative traits. These inherent characters, especially negative characters, are very difficult to get rid of. However, it is not impossible to get rid of it.

NUMEROLOGY

5. **What is Numerology.** Numerology is a science, a psychology and a philosophy. It is a science because it is a method for us to find our way around objectively. As a psychology, it offers us information about our psychological patterns of behavior, and it is a philosophy or a way of life (Ducie, 2009). It is a wonderful and practical tool that enables us to understand more about ourselves and the world we live in. Numerology can take us to great depths of profound knowledge and understanding about our life by applying a powerful key that helps to unlock your subconscious mind. It, therefore, helps to reveal more information about the real us and hidden aspects contained within our chart.

6. There are many different techniques of Numerology applied in many practices around the world today. Many ancient methods are still used today. Pythagorean Numerology remains one of the most popular methods of Numerology used in the West today. Pythagoras was passionate about his sciences, particularly numbers, and being a brilliant mathematician and philosopher, he was also an aspiring numerologist. Pythagoras developed cycles 1 to 9. He believed numbers to be the essence of all life. Numbers are not solid objects but are moving energies or vibrations. Each number contains the potential for light or positive experiences (connection) and the dark shadow side or negative experiences (separation) within them. In Numerology, each number highlights both strengths and challenges, which are carried within its potential. Each number also contains spiritual, mental, emotional and physical elements. In this research, the date of birth is used to determine our innate character. The logic behind this is that the energy from the sun, stars and moon when humans were first born is very influential in forming our basic character—this numerology is known as Life Path Number.

7. **Calculating Life Path Number.** Life Path Number gives us information about where we fit into the bigger picture and gives potential direction in life. It contains soul elements too. We can find our Life Path Number by simply adding up all the numbers in our date of birth.

Example: John was born **27th November 1984**

Add up the day and month of birth, $27 + 11 = 38$

Add up the year of birth $1984 = 1 + 9 + 8 + 4 = 22$

Add up $38 + 22 = 60$

To find a single digit between 1 and 9 add $6 + 0 = 6$

Therefore, John's Life Path is **6**

After getting the Life Path 6, look for the number according to the Life Path Number below: -

- a. **Life Path 1.** His mission in life is always to be independent. There are two parts to the process of achieving this: first, you must learn to stand on your own two feet and not depend on others. Then once you are genuinely free and independent, learn to be a leader. Many generals, corporate leaders, and politicians have a Life Path 1. **People with this Life Path always have great potential to be leaders, but they can fail if they become followers.** Many of them spend most of their time trying to let go of their dependence on others, but this leaves them little time for the pleasures of independence. People with Life Path one must get out of an environment that makes them easy to depend on and demand freedom. Those with Life Path 1 are full of creative inspiration, enthusiasm, and drive to achieve many things. The spirit and potential come from the depths of the power possessed. Both physical and character. With this power comes persistence and the ability to lead. **As a natural leader, you have the leverage to take charge of every situation. Too confident and impatient.** Very original, you are gifted as an inventor or innovator. In each job you

choose, your independent attitude will show. **You have powerful personal desires, and you always feel compelled to follow your own beliefs.** If a person with this Life Path 1 has not evolved well and shows a negative side, what appears is the side of his character that depends on people. If it is at its worst, the energy of the Life Path 1 can makes it selfish.

b. **Life Path 2.** The positive character of those with Life Path 2 is sensitivity which generally has a subtle ability to be fair and balanced. You can see multiple points of view in any argument or situation so that people will look to you as a mediator. In this role, you can resolve disputes in a classy manner. There is genuine concern for others; you think the best about them and want the best for others. You are honest and open in your thoughts, words and actions. You tend to be successful in all group activities, where you practice your ability to bring people together from various backgrounds. Etiquette and diplomacy are how you relate to people at all times. You are a routine human who feels comfortable always follow old habits. New things to try are not your thing. But you are a master at compromising and maintaining harmony in the environment, not liking to humble yourself into arguments. **A natural collector, in the sense that he rarely throws away things that (although to others he is thrown away) are still of some use to you.** The negative side of Life Path 2 is not that much of a problem. The biggest obstacle and difficulty you can encounter is passivity and a state of apathy and slowness. Also, a pessimistic attitude and can only achieve a few things. If the downside is more dominant, those with this Life Path are not well suited to the business world. Despite their prominent positive traits, they prefer to be in a less competitive and intimate environment.

c. **Life Path 3**. For those whose Life Path 3, expression, socialization, and creativity are lessons that must take in life. World-class entertainers, sparkling and optimistic people are included. People with Life Path 3 who have honed their talents have unique creative skills, usually verbal, writing, acting, or something similar. His mission in life is success in expression. The bright side for these people is about harmony, beauty and fun, and sharing your creative abilities with the world. Honing your skills in creative expression is the ultimate mission for this Life Path. **Their character is warm and friendly, good conversationalist, social and open. A skilled speaker in the sense of not only someone pleasant to hear, but more importantly, someone who can listen.** They are individuals who are always well received in any social situation and understand how to make others feel welcome. The potential for creative imagination is always there, although latent, because they are not permanently moved to develop this potential. His attitude towards life is almost always positive, and his attitude is cheerful and open. You can deal effectively with many obstacles in life and instantly get back on your feet. You have good manners and seem to be quite sensitive to other people's feelings and emotions. A life lived fully, often without concern for tomorrow. You are not very good at handling finances because you don't think it is essential. Money will be spent when you have it and not spent when you have no money. On the downside, their attitude in life can be so mild as to make it superficial. Your abilities are often scattered, and you lose focus. **Those with Life Path 3 are puzzles, and you often change moods and tend to shy away.** It's hard for you to stay in one place. Take care not to be critical of people, impatient, or overly optimistic. These Life Path 3 provide above-average abilities in the arts. Whether painting, interior design, landscaping, writing, music, theatre, or all of them. You are always happy, full of inspiration, and always looking for stimulation

from like-minded people. Your bustling nature supports you flying, mainly if you can focus your energy and talents on the right interests.

d. **Life Path 4.** If the number of digits on your birthday is 4, you are trustworthy, practical, and down to earth. You are a reliable member of society. The mission in life is to learn to take orders or duties and carry them out with dedication and tenacity. You always expect a lot from yourself, just as you expect a lot from others. As a great organizer and planner, because of your ability to see things practically, you have a strong will, often misinterpreted as stubbornness. **Once a decision is made, it will immediately proceed until it concludes, even if it is wrong, right, or neutral.** Your mindset is not easy to change, and so confident in the way you handle problems. Your tenacious way of achieving goals is almost an obsession. Loyal and devoted, you are an ideal partner in married life and a reliable business partner. You may not have many friends, but they are very close and very friendly usually throughout life. These Life Path 4 relate to the earth element, which gives it power and a realistic feeling. If patience and persistence are your daily traits, then you will obtain great success in life. The negative side of these 4 is an attitude that is too dogmatic, narrow-sighted, and repressive or inflexible towards new ideas. You don't like superficial people, and you're too open about your feelings. The negative 4 have a terrible tendency to get too deeply involved with daily routines and are often less responsive to broader issues, so it's not uncommon to miss out on the incredible opportunities that occasionally come their way.

e. **Life Path 5.** Many interests and abilities, adventurous and progressive, are some of the descriptions for Life Path 5. Instead of 4, you don't like routine, so the daily work you must do immediately is not for you. Always trying to find answers to the mysteries of life,

you want always to be free, independent and unbound. **People with Life Path 5 are great communicators and know how to motivate others.** This makes you a good teacher. The love of adventure is the theme of your life. It could be in tangible form or just in mind. Whatever it is, you are always enthusiastic about exploring new things. You have a lot of potentials but no direction. Also, often not clear about your desires. The energy in this Life Path 5, if misused, makes you feel no sense of responsibility in tasks and decision-making in household or business life. A love for thrills and adventure can lead you to prioritize self-gratification and be insensitive to the feelings of those around you. For those who are at the negative extreme, this Life Path 5 is highly unreliable and self-serving. This personality is very indulgent for most, loves to have fun, lives for today, and doesn't want to think about tomorrow. You must associate with people with similar tastes and mindsets and avoid severe and demanding people. It's also essential to choose jobs that challenge your mind instead of routine tasks. The best careers are those in dealing with people, but most importantly, you should have the freedom to express yourself at all times.

f. **Life Path 6.** Unlike number 5, the Life Path 6 that stands out the most is a great sense of responsibility. You are idealistic and happy to be of use to others. The most significant contribution you can make in life is providing advice, service and support. The theme of this Life Path is leadership because of its ability to set an example and willingness to take responsibility. This makes you always willing to bear the burden of the group and ready to help. You are often driven to act with strength and compassion. You are sympathetic and enjoy sharing with others, both mentally and materially. Wisdom, balance and understanding are some of your traits. Your ability to understand other people's problems has been in your character since childhood, so there are no problems in dealing with young and

old alike. You are willing to put in more effort than is required, and you can always rely on your family. You view life as realistic; for you, an essential thing in life is home, family and friends. Of course, everyone has a negative side; for this Life Path 6, you must avoid the tendency to accept too much responsibility and be enslaved by others. Also, avoid being too critical of yourself and others. **If the lousy character is nurtured, it tends to overdo it and feel the most self-righteous**, although it doesn't constantly develop like this. It should also be avoided, imposing one's own opinion and taking care of other people's problems. Because you always feel you have to take responsibility, the burden you carry will be hefty; however, if you are forced to irresponsibly once in a while, you will feel very guilty and will have a detrimental effect on relationships with others people.

g. **Life Path 7.** Life Path 7 are peaceful and loving but analytical and not very open. The incredible power within you is seen in your way of thinking; you constantly accumulate new knowledge in everything you find. An intellectual, scientific, and always seeking knowledge, **you will not take a view for granted without testing it and coming to your own conclusion.** This number is also spiritual and, since childhood, has shown wisdom. You need calm so that you can know what's in your heart: crowds, many people, not things you like. You will work it through to completion at work because you are a perfectionist who expects everyone to meet high-performance standards. You evaluate the situation quickly and correctly. Experiences and intuition guide you into action. You don't easily trust other people's advice. Indeed, your assumptions are often correct, and because you are well aware of these, you always follow them. It's easy for you to spot a lie, and you can tell which people are honest and who isn't. You don't have many friends, but once you accept someone as a friend, it's for a lifetime. You're not someone who likes to hang out with people, and your introverted attitude is seen as

distancing yourself. That's not true at all; you do want to be alone, away from all the hustle and bustle of modern life. In many ways, you are better suited to living in an era long before the present. If the energy of the number 7 in this Life Path is used negatively, you become a pessimist, uncaring, contentious and secretive. If this individual does not live life properly and does not learn from experience, he becomes a problematic person because he cannot think of the interests of others. These Life Path 7 personalities are selfish and spoiled. If you feel you have these qualities, it is difficult to erase them quickly because you think the world should always treat you well. Fortunately, these seven negative traits are not expected. The emotion of this number is often extreme, being low one moment, then high the next. Rarely stable.

h. **Life Path 8.** Your focus is on getting the satisfaction that comes from the material world. Life Path 8 are people who are confident, strong and materially booming. You are independent, full of encouragement and competitive. Your daily routine includes business relationships, practical and down to earth, very little time for dreams and fantasies. When your ambition, organizational skills, and efficient approach are honed, there's nothing you can't achieve. **Your focus is primarily on money and the power of manipulation within it.** This Life Path 8 is perhaps the most critical status and class, which goes with material success. If these eight characters develop correctly, you are endowed with great potential to create progressive ideas, as well as the tenacity and independence to make them happen. In short, with all these characters, you are well prepared to compete in the business world or other competitive areas. You know very well how to manage yourself and your environment. Practical and stable in your pursuit of goals, you have convictions that make you brave. Their negative nature with Life Path 8 can be dictatorial at times and often stifles the enthusiasm and

effort of their friends in the environment. Also, the strength of this personality makes you feel less close to the people around you. Material gains and rewards become the essential things, so family, home, and peace of mind are neglected. Emotional feelings are often suppressed in a negative Life Path. This creates a sense of isolation and solitude. It would help if you always tried to respect the opinions of others.

i. **Life Path 9.** The main traits of Life Path 9 are love for others and a very humane attitude. This is a mission that you must learn in life. Usually, this number produces a very trustworthy and respectable individual and an individual who is not racist in any form. Of course, this all seems like an overly perfect list of traits, but you are indeed sensitive to those less fortunate than you. And if you're in a position to help, you will. You are very sensitive and look around yourself with love. You with this highest Life Path number are in an increased life position and naturally have many responsibilities. The purpose of Life Path 9 philosophical nature. Judges, spiritual leaders, healers and educators, often have energy of number 9. Material gain is not that important to you, although **the personality qualities of some of you are so unique that they make for great material rewards.** For the good of many, you often have to be selfless and give up material things. Even the not-so-special Life Paths have very compassionate personalities. **You have the powerful desire to help people, especially the troubled and disadvantaged.** Your kindness is also often abused, and you are also often let down by others. Your deep understanding of life is sometimes realized in the form of art and literature. With this Life Path, you can express your deepest emotions by painting, writing, music, or other art forms. But often, there is also difficulty in finding the right media for your way of life. Helping and healing professions are the right choice for those with Life Path 9. You are not apt to be in a competitive business

environment. You can make friends easily because people are attracted to your open, magnetic personality. **God gifts you in the form of the ability to understand people, which can be of great benefit to others if used correctly. Attention to others makes you very social. People quickly like those with Life Path 9 because you are sympathetic, tolerant and broad-minded. You are a romantic and in love and passion like lost on the right path.** Building a relationship is difficult for you because it is not easy to get the rightest balance. If your partner is like you, i.e., has a giving nature, the relationship will be happy and enduring but difficult materially. On the other hand, if you choose a down-to-earth and worldly individual, problems will arise. As with other Life Path numbers, the number 9 has a downside. Although, of course, the people who tend to the opposing point 9 are fewer than those with prominent positive characters. It's normal for them to go against the currents of reality and the challenges that exist in the world.

STRENGTHS OF THE LIFE PATH

8. Each life path number carries a positive or negative character. Positive characters, if optimized, will bring benefits to us. The following are positive characters that stand out from each life path number: -

- a. **Life Path 1.** The leader. As a natural leader, you have the leverage to take charge of every situation.

- b. **Life Path 2.** The Inward creator/ motivator. A natural collector, in the sense that he rarely throws away things that (although to others he is thrown away) are still of some use to you.

- c. **Life Path 3.** The informed speaker/ communicator. Their character is warm and friendly, good conversationalist, social and open. A skilled speaker in the sense of not only someone pleasant to hear, but more importantly, someone who can listen.

- d. **Life Path 4.** The realist, problem solver, builder of order.

- e. **Life Path 5.** The unending talent.

- f. **Life Path 6.** The responsible one/ the server. The theme of this Life Path is leadership because of its ability to set an example and willingness to take responsibility. This makes you always willing to bear the burden of the group and ready to help. You are often driven to act with strength and compassion. You are sympathetic and enjoy sharing with others, both mentally and materially. Wisdom, balance and understanding are some of your traits. Your ability to understand other people's problems has been in your character since childhood, so there are no problems in dealing with young and old alike. You are willing to put in more effort than is required, and you can always rely on your family. You view life as realistic; for you, an essential thing in life is home, family and friends.

- g. **Life Path 7.** The source of knowledge, expert/ thinker/ analyze. The incredible power within you is seen in your way of thinking; you constantly accumulate new knowledge in everything you find. An intellectual, scientific, and always seeking knowledge. This number is also spiritual and, since childhood, has shown wisdom. It's easy for you to spot a lie, and you can tell which people are honest and who isn't.

h. **Life Path 8.** The in-the-moment intuitive. When your ambition, organizational skills, and efficient approach are honed, there's nothing you can't achieve.

i. **Life Path 9.** The material and humanity master. The personality qualities of some of you are so unique that they make for great material rewards. You have the powerful desire to help people, especially the troubled and disadvantaged. God gifts you in the form of the ability to understand people, which can be of great benefit to others if used correctly. Attention to others makes you very social. People quickly like those with Life Path 9 because you are sympathetic, tolerant and broad-minded.

CHALLENGES OF THE LIFE PATH

9. Negative characters, if not identified and mitigated, will bring us disadvantages. The following are disadvantages that can arise, both personally and when we interact with other people. Following are the types of risks along with examples: -

a. **Individual.** The following are the disadvantages that arise in each life path number: -

- **Life Path 1.** People with this Life Path always have great potential to be leaders, but they can fail if they become follower. As a natural leader, you have the leverage to take charge of every situation. Too confident and impatient. You have powerful personal desires, and you always feel compelled to follow your own beliefs.

- **Life Path 2.** The biggest obstacle and difficulty you can encounter is passivity and a state of apathy and slowness.
- **Life Path 3.** Those with Life Path 3 are puzzles, and you often change moods and tend to shy away.
- **Life Path 4.** Once a decision is made, it will immediately proceed until it concludes, even if it is wrong, right, or neutral. Example: Donald Trump, Kim Jong Un, Min Aung Hlaing.
- **Life Path 5.** The energy in this Life Path 5, if misused, makes you feel no sense of responsibility in tasks and decision-making in household or business life.
- **Life Path 6.** If the lousy character is nurtured, it tends to overdo it and feel the most self-righteous.
- **Life Path 7.** You will not take a view for granted without testing it and coming to your own conclusion. The emotion of this number is often extreme, being low one moment, then high the next. Rarely stable. Example: Vladimir Putin, Sri Mulyani (Indonesian Ministry of Finance), Elon Musk.
- **Life Path 8.** Your focus is primarily on money and the power of manipulation within it. Their negative nature with Life Path 8 can be dictatorial at times and often stifles the enthusiasm and effort of their friends in the environment. Example: Joko Widodo (Indonesian President).

- **Life Path 9.** It's normal for them to go against the currents of reality and the challenges that exist in the world.
- b. **An Endless Debate.** Life Path 1, Life Path 4, Life Path 6, Life Path 7. If people with this Life Path have a discussion and they do not yet understand what they are like. As Lao Tzu said, they have not yet attained enlightenment. So, when they were discussing, the potential for an intense and endless discussion would be very high. This happens because of the following:
- Life Path 1, they always feel compelled to follow your own beliefs.
 - Life Path 4, Once they made a decision, it will immediately proceed until it concludes, even if it is wrong, right, or neutral.
 - Life Path 6. If their lousy character is nurtured, they tend to overdo it and feel the most self-righteous.
 - Life Path 7, They will not take a view for granted without testing it and coming to your own conclusion.

CONCLUSION

10. Leadership is a significant factor influencing success in an organisation. The leader starts from the leader for himself. We can achieve success as a leader if we can build success from inside ourself out. To build success from the inside, we need to identify and mitigate the opposing character. Numerology based on the date of birth known as Life Path Number is a tool that can help us to identify our inherent characters. Our success in leading ourselves will be able to set an example for others. This

successful leadership will automatically foster the confidence of others in us as leaders and will be able to take us to a higher organisational level as a leader.

THE WAY FORWARD

11. We can take advantages from this research as follow:
 - a. No change, no future. The future of a country is primarily determined by its leaders. We are all leaders. Whether we are good or bad, we will determine the future of the people we lead (our children), which will determine our nation's future. Only a change for the better will bring a bright future for our country.
 - b. With cesarean technology that is very sophisticated today, we can choose the best day to give birth so that the life path number is as expected. For example, if we want to create a group of scientists, we can pick Life Path 7.
 - c. We can use the Life Path Number tool to find the basic information about other/target for conducting a psywar or psychological operation to someone or a leader of adversary.
 - d. The bad character of human come up when we are in a bad and weak condition. Human is not always in a good condition to control himself. Have a good friend so when we are in a bad condition and can't control ourself for being negative, then our good friend will help us to control us from being negative.
 - e. If this tool is not suitable or you disagree, try to find another tool or way to identify the positive/ negative character that sometimes

comes up in us to amplify/exploit the positive one and mitigate the negative.

REFERENCES

1. Ducie, S. (2009). *Numerology : Your Personal Guide for Life*.
2. Hao, M. J., & Yazdanifard, R. (2015). How Effective Leadership can Facilitate Change. *Global Journal of Management and Business Research: A Administration and Management*, 15(9), 0–6.